

"Limbic lobe"

- 1. Cingulate gyrus
- 2. Cingulate sulcus

Frontal lobe

- 3. Superior frontal gyrus
- 4. Superior frontal sulcus
- 5. Middle frontal gyrus
- 6. Precentral sulcus
- 7. Precentral gyrus
- 8. Central sulcus

Parietal lobe

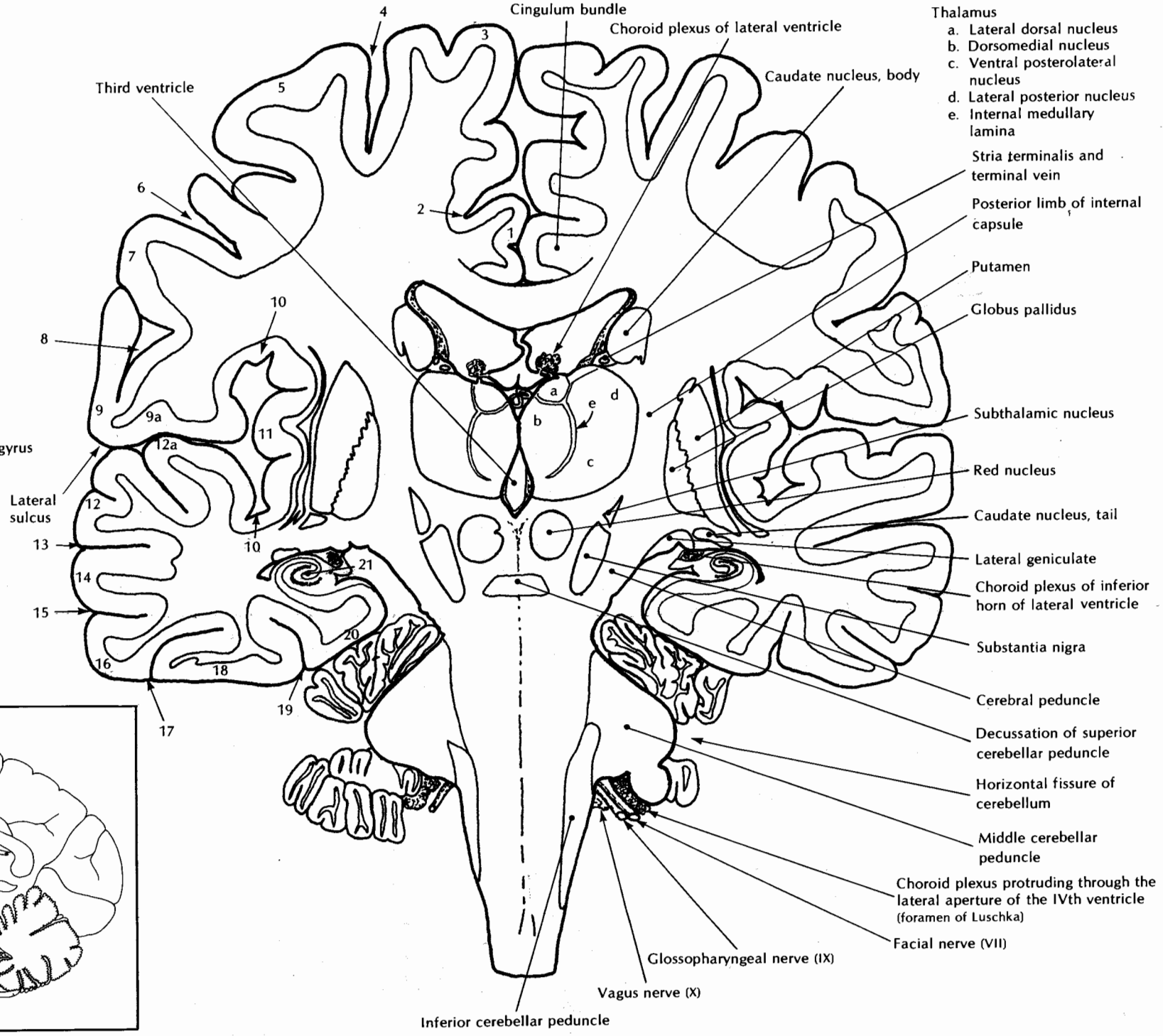
- 9. Postcentral gyrus
- 9a. Parietal operculum

Insular lobe (insula)

- 10. Circular sulcus
- 11. Insular gyri

Temporal lobe

- 12. Superior temporal gyrus
- 12a. Temporal operculum
- 13. Superior temporal sulcus
- 14. Middle temporal gyrus
- 15. Middle temporal sulcus
- 16. Inferior temporal gyrus
- 17. Inferior temporal sulcus
- 18. Occipitotemporal (fusiform) gyrus
- 19. Collateral sulcus
- 20. Parahippocampal gyrus
- 21. Hippocampus



Thalamus

- a. Lateral dorsal nucleus
- b. Dorsomedial nucleus
- c. Ventral posterolateral nucleus
- d. Lateral posterior nucleus
- e. Internal medullary lamina

Stria terminalis and terminal vein

Posterior limb of internal capsule

Putamen

Globus pallidus

Subthalamic nucleus

Red nucleus

Caudate nucleus, tail

Lateral geniculate

Choroid plexus of inferior horn of lateral ventricle

Substantia nigra

Cerebral peduncle

Decussation of superior cerebellar peduncle

Horizontal fissure of cerebellum

Middle cerebellar peduncle

Choroid plexus protruding through the lateral aperture of the IVth ventricle (foramen of Luschka)

Facial nerve (VII)

Glossopharyngeal nerve (IX)

Vagus nerve (X)

Inferior cerebellar peduncle

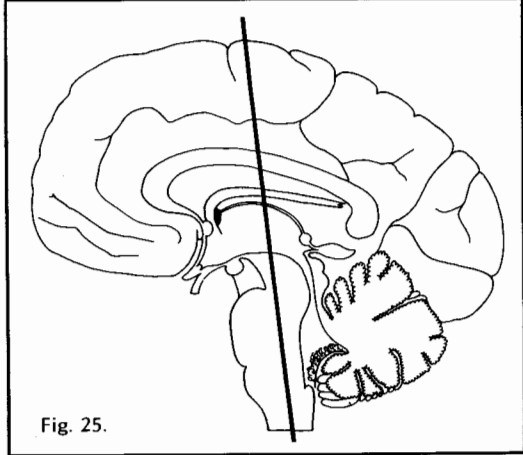


Fig. 25.

Figure 25. Coronal section of the gross brain through the red nucleus viewed from its posterior surface—1.3X