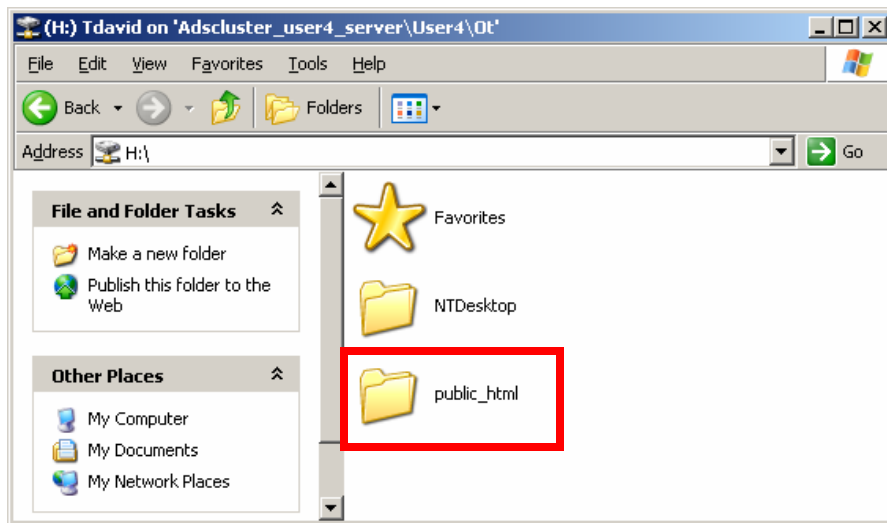


Making a Web site from Student Computer Labs

Most student Novell Space (H: Drive) will have a “**public_html**” folder in it. This is where Web pages need to go so others can view them. Your folder probably looks something like this:



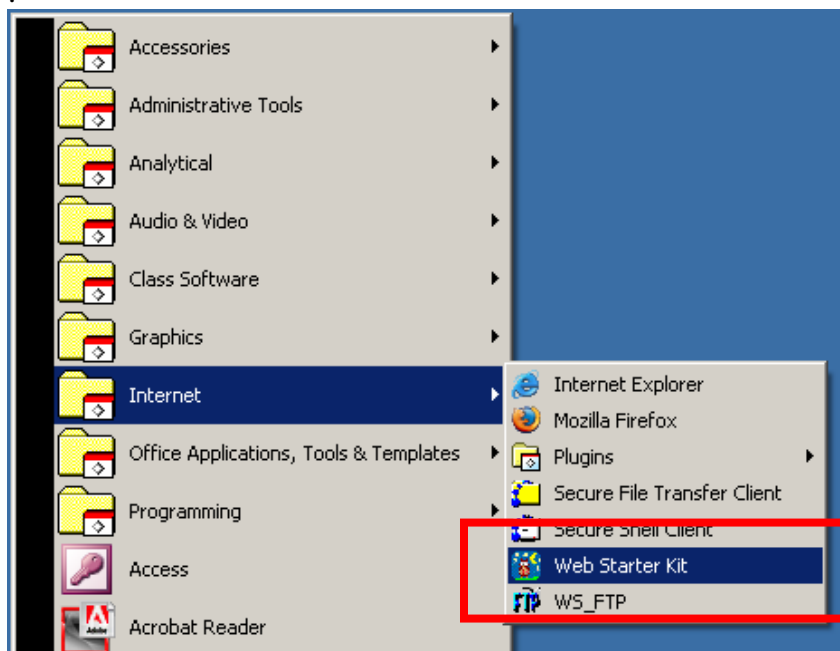
For example, the Web address for the folder above is: <http://www.webpages.uidaho.edu/~tdavid/>
For you, replace “tdavid” with your own UI username.

If no “**public_html**” directory you will need to run the **Web Starter Kit**.

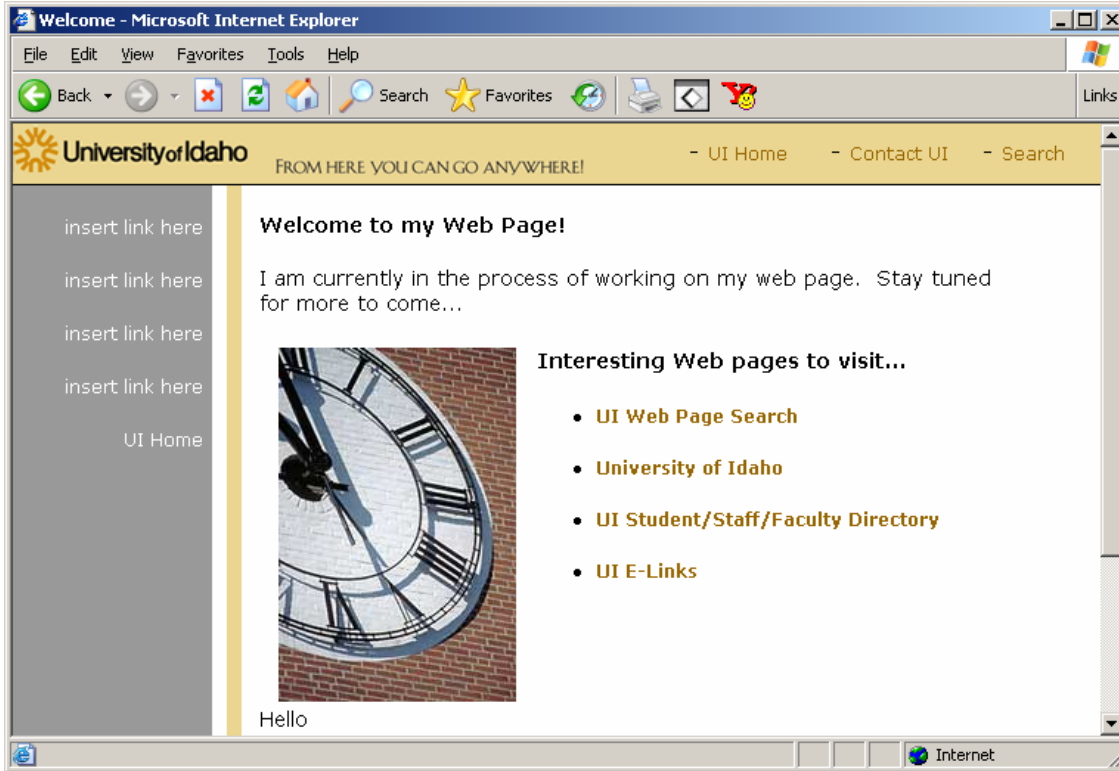
ITS Helpdesk Instructions for starting a Web site are here: <http://www.support.uidaho.edu/default.aspx?pid=45546>

Students start with 60 MB of space and can visit the ITS Help Desk if they need more.

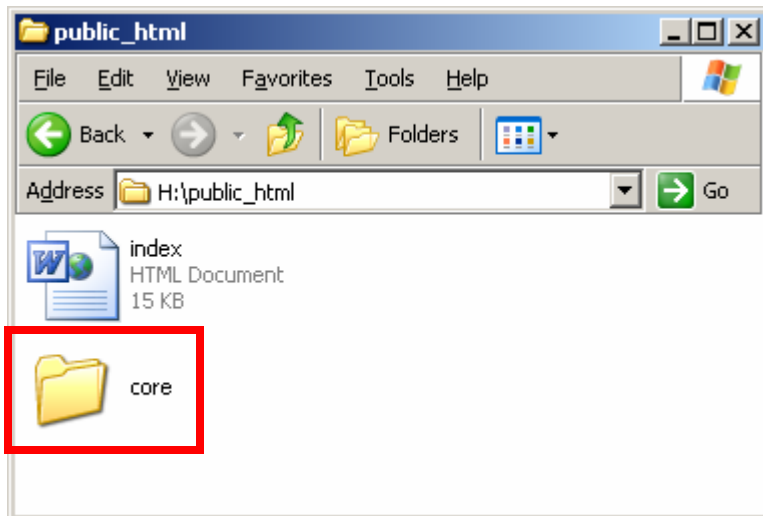
When in the ITS Student Labs, you can run the **Web Starter Kit** this way, if necessary:



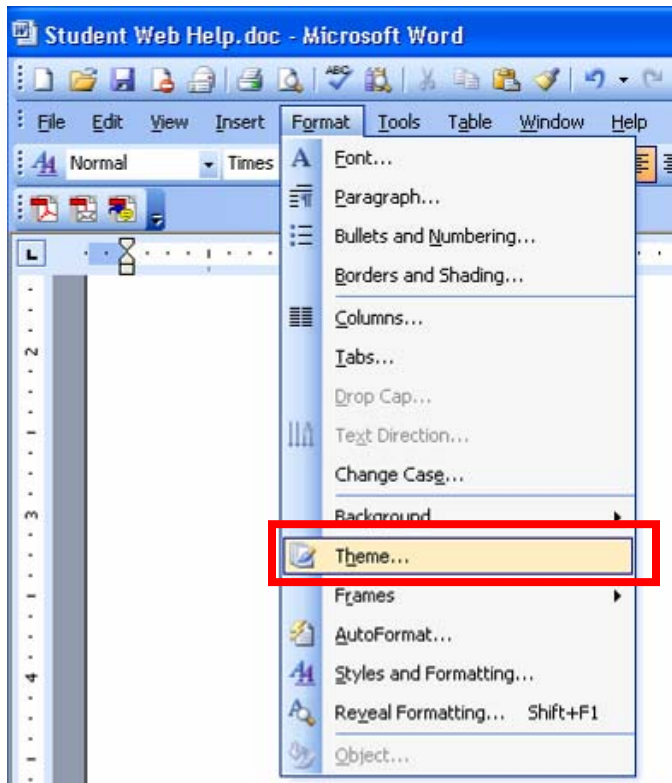
The **Web Starter Kit** will create one Web page that looks like this, which you can modify with Microsoft Word or Dreamweaver MX:



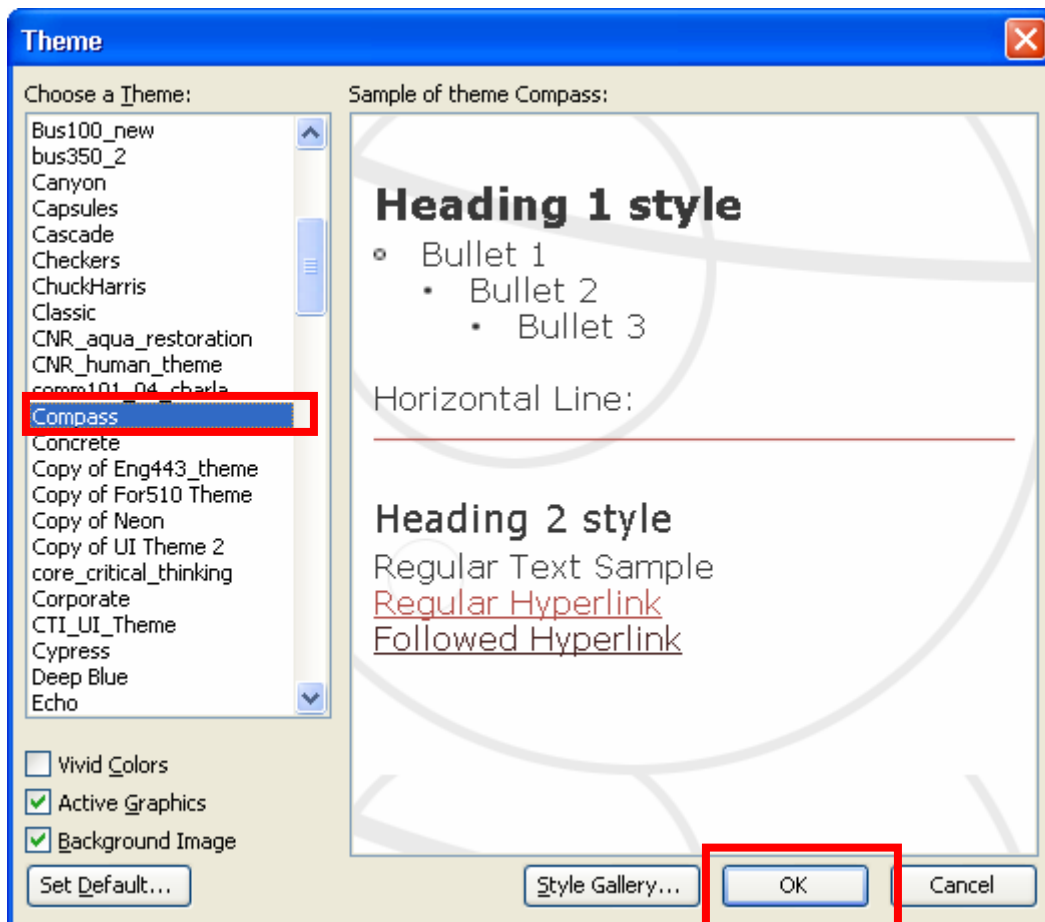
You may want to make a sub-folder called “**core**” inside your “**public_html**” folder to keep the CoreWeb site separate from your personal site.



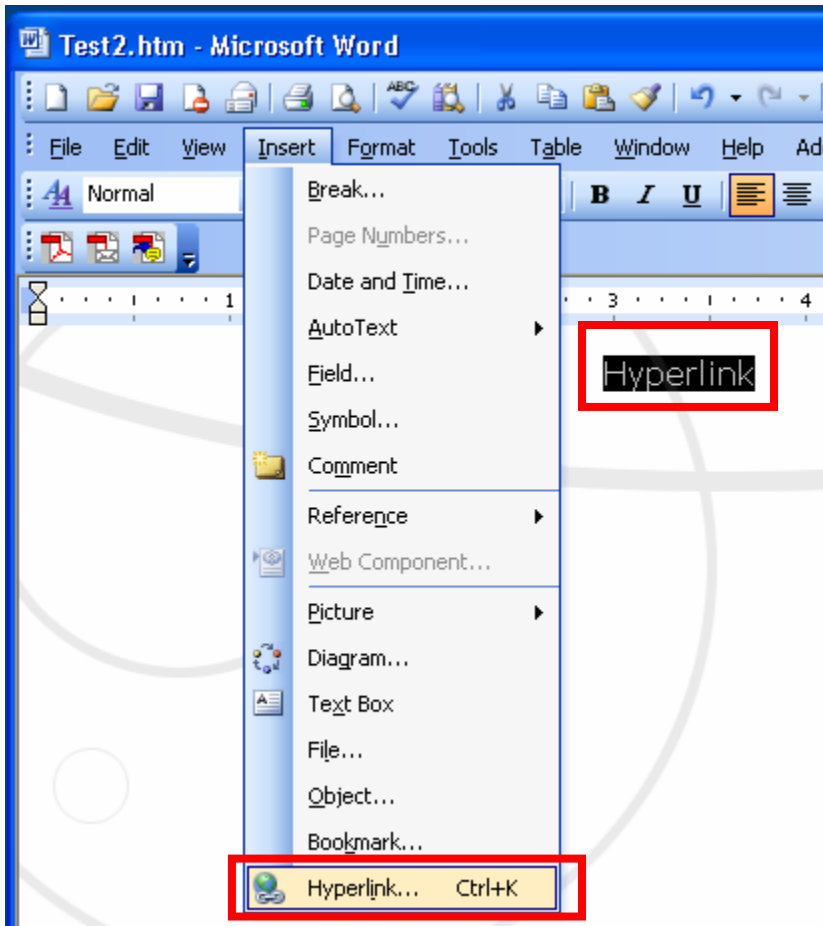
While in Microsoft Word you can use a Theme to make your pages more visually interesting:



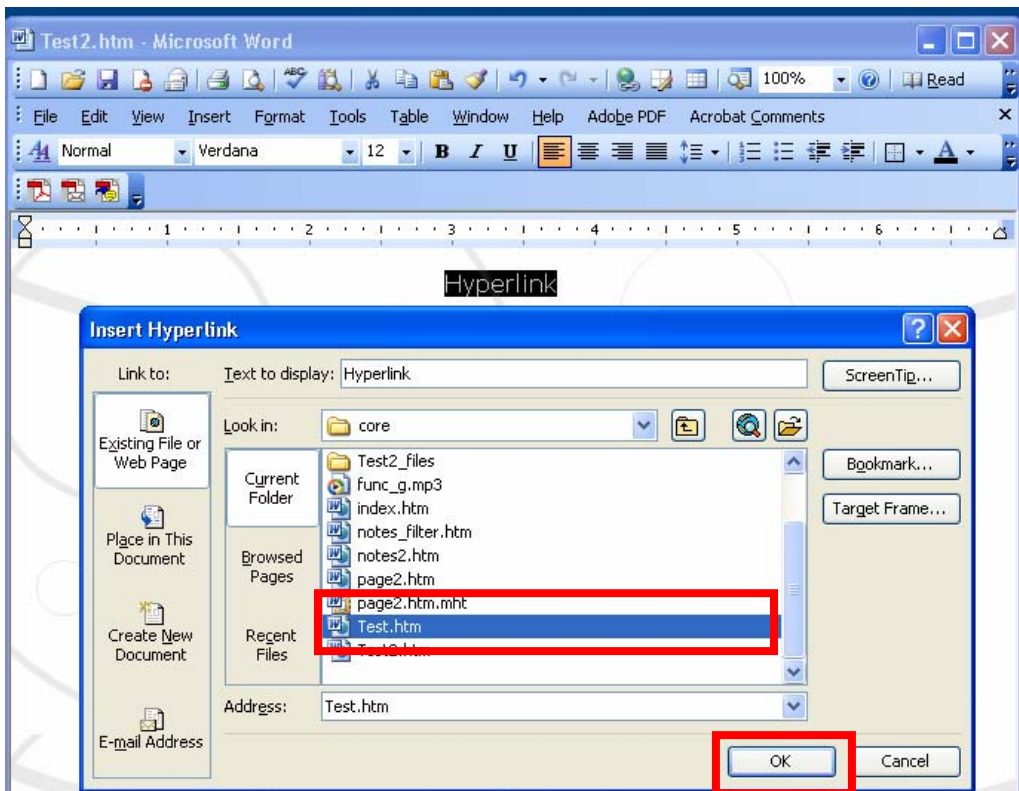
Next Pick a Theme and choose OK:



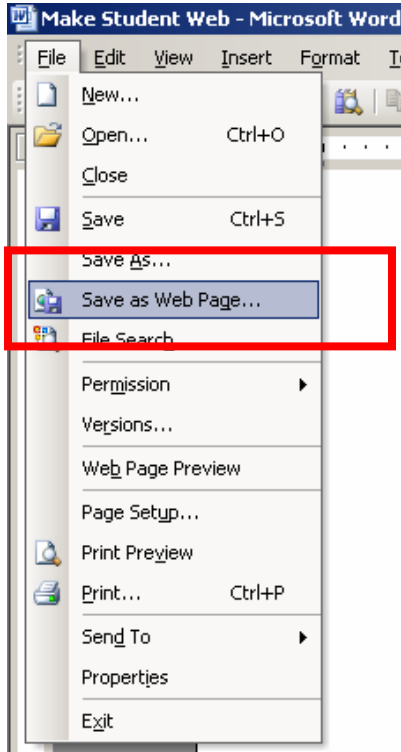
To make hyperlinks between existing individual pages, highlight text (or an image) on the page, choose **Insert Hyperlink** from the Insert menu:



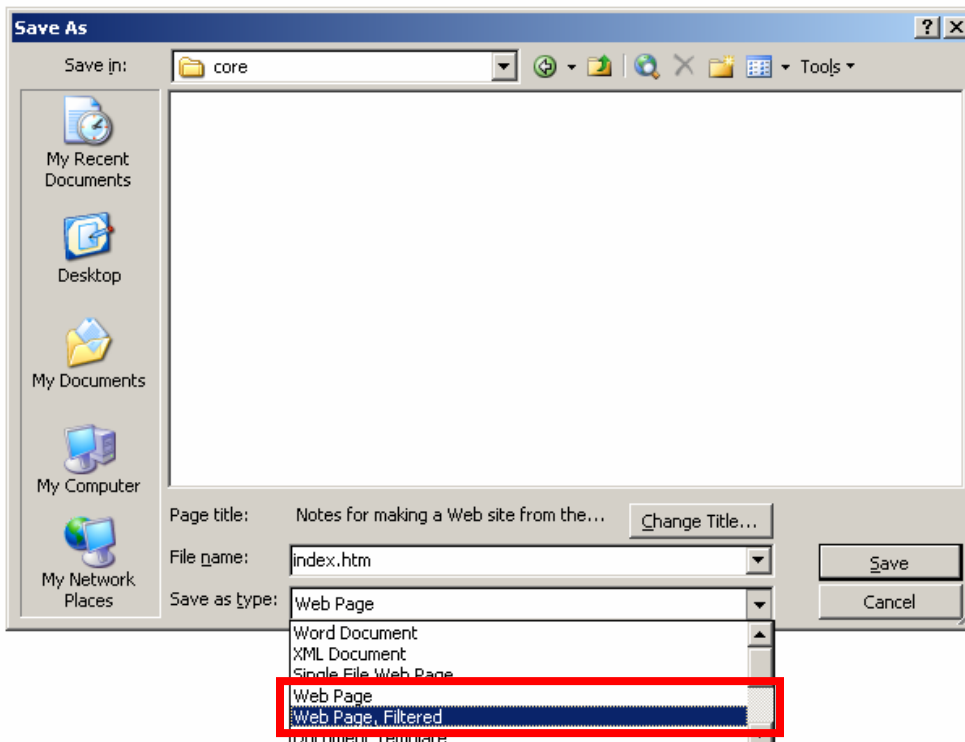
Next choose the ".htm" file you want to link to, and click OK:



From Microsoft Word, save your file as a Web Page like so:

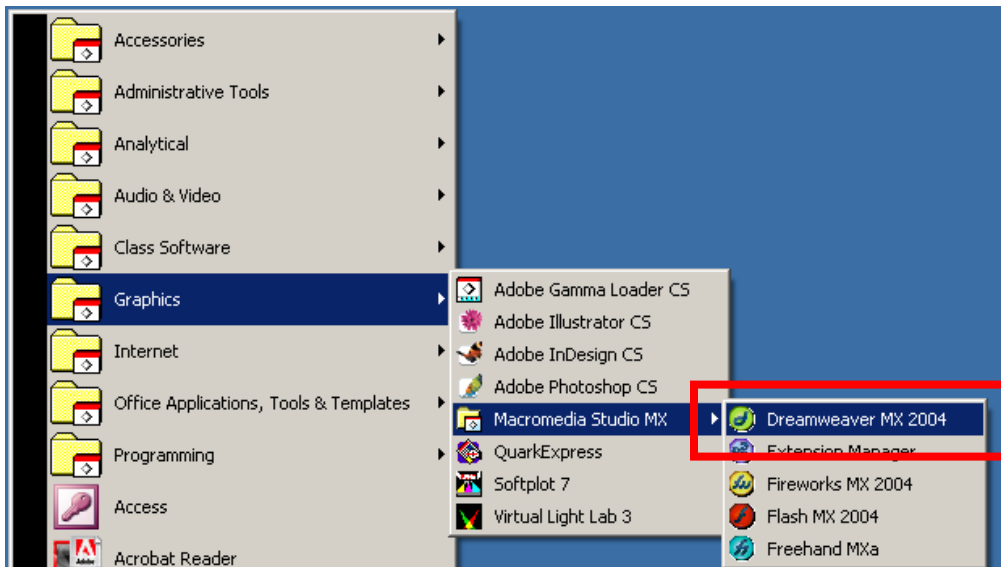


Make sure you select from the **Save as type** pull down “**Web Page**” or “**Web Page, Filtered**” (takes out Microsoft Office specific code). Do not use the other choices. Also, the main starting page of your site should be named “index.htm” since that is what visitors see by default when they go to your Web site.

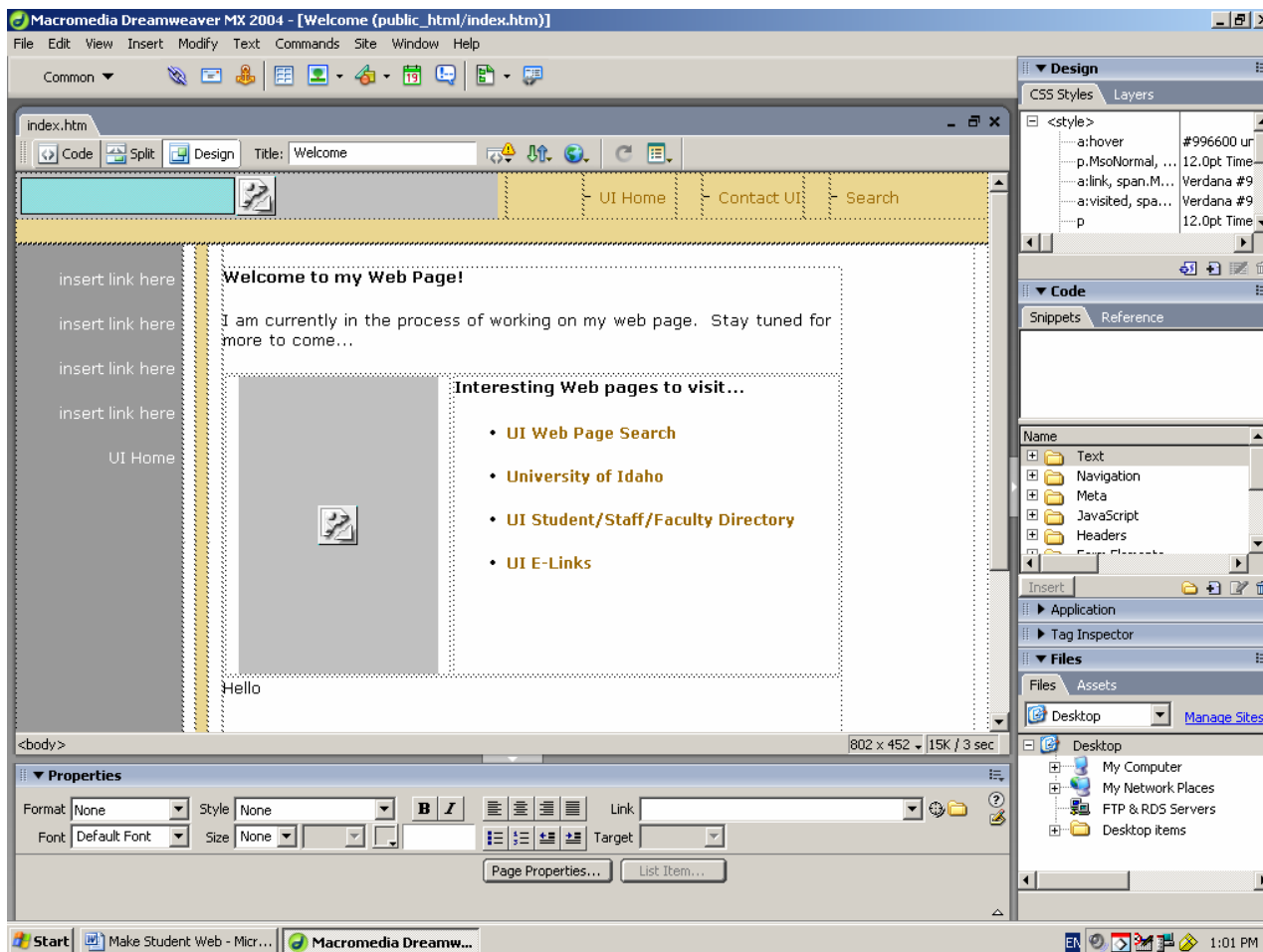


Word makes it's own folders inside the directory you save to, and puts images inside these directories.

Of course, if you already have Web building skills or wish to gain those skills, you can use the Program Dreamweaver MX in the Student Labs to save pages into your “**public_html**” directory. Run the program from here:



This program is used to make professional Web sites and looks like this:



Online books you can read about Dreamweaver can be found via the UI Library's Books 24x7 link: <http://www.lib.uidaho.edu/ebooks.htm>

To find images to put in your site you can use the ITS media library: <http://www.its2.uidaho.edu/medialib/>